

# Toyota IC Counterbalance Trucks

The Toyota Tonero Range



## Toyota Tonero

UP TO 3.5 TONNES WITH TORQUE CONVERTER OR HYDROSTATIC TRANSMISSION



Highly productive and reliable trucks  
for light to heavy-duty applications

---

1.5 – 3.5 TONNES LOAD CAPACITIES  
DIESEL OR LPG ENGINES  
TORQUE CONVERTER OR HYDROSTATIC TRANSMISSION

P.4 (TC) / P.6 (HST)

# Toyota Toner

FROM 3.5 UP TO 8.0 TONNES WITH TORQUE CONVERTER TRANSMISSION



Robust and durable trucks  
for heavy work or multi-pallet handling

---

3.5 – 8.0 TONNES LOAD CAPACITIES  
DIESEL OR LPG ENGINES  
TORQUE CONVERTER TRANSMISSION





# TOYOTA TONERO

## WITH TORQUE CONVERTER

The Toyota Toner is a versatile family of engine-powered counterbalance trucks suitable for all applications up to 3.5 tonnes. They offer stability and productivity during these light to heavy-duty outdoor applications, and provide driver comfort as well as all-round visibility thanks to the wide range of cabins. These fast and manoeuvrable trucks are available with diesel (surpassing the latest Stage V regulations) or LPG engines.

## SPECIFICATIONS

**Load capacity:** 1.5, 1.75, 2.0, 2.5, 3.0, 3.5 t @ 500 mm load centre

**Maximum lift height:** 7.0 m

**Engine choice:** • EU Stage V: 1DZIII (Diesel – 17.5 kW for 1.5 to 1.8 t)

• 1ZS (Diesel – 41 kW)

• Non-EU: 1DZIII (Diesel – 36 kW for 1.5 to 3.5 t)

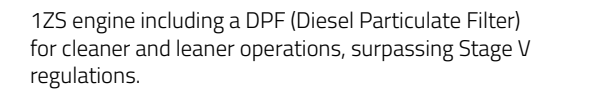
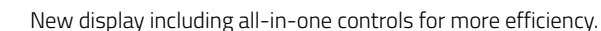
• 4Y (LPG – 38/42 kW)

**Available with:** | Site

**SAS**







### Load handling

Engine

## Safety features

[illegible]

● standard ° option

**Lights and indicators**

	Safety	Durability	Productivity	Driveability	02-8FGF15	42-8FDF15	02-8FGF18	42-8FDF18	02-8FGF20	52-8FDF20	02-8FGF25	02-8FGF30	52-8FGF35	52-8FDF35	02-8FGKF20
LED headlights					●	●	●	●	●	●	●	●	●	●	●
LED fr combination light					°	°	°	°	°	°	°	°	°	°	°
Mast additional headlights					°	°	°	°	°	°	°	°	°	°	°
Top additional headlights					°	°	°	°	°	°	°	°	°	°	°
Bottom additional headlights					°	°	°	°	°	°	°	°	°	°	°
Low profile LED mast mounted headlights					°	°	°	°	°	°	°	°	°	°	°
LED rear combination lights					●	●	●	●	●	●	●	●	●	●	●
Rear combination lights guard					°	°	°	°	°	°	°	°	°	°	°
LED-rear working light (selective lighting condition)					°	°	°	°	°	°	°	°	°	°	°
Add. rear LED working light					°	°	°	°	°	°	°	°	°	°	°
Rotary beacon					°	°	°	°	°	°	°	°	°	°	°
Flashing beacon					°	°	°	°	°	°	°	°	°	°	°
Lowered flashing beacon					°	°	°	°	°	°	°	°	°	°	°
Blue light (selective lighting condition)					°	°	°	°	°	°	°	°	°	°	°
Rear-view mirror, right and left sides					°	°	°	°	°	°	°	°	°	°	°
Panoramic mirror					°	°	°	°	°	°	°	°	°	°	°
Smart access					°	°	°	°	°	°	°	°	°	°	°
Keypad					°	°	°	°	°	°	°	°	°	°	°
I_Site with shock sensor					°	°	°	°	°	°	°	°	°	°	°
E-bar					°	°	°	°	°	°	°	°	°	°	°

**Body**

	Safety	Durability	Productivity	Driveability	02-8FGF15	42-8FDF15	02-8FGF18	42-8FDF18	02-8FGF20	52-8FDF20	02-8FGF25	02-8FGF30	52-8FGF35	52-8FDF35	02-8FGKF20
Antistatic strap					°	°	°	°	°	°	°	°	°	°	°
Key off head light off system					●	°	●	●	●	●	●	●	●	●	●
Reflector					°	°	°	°	°	°	°	°	°	°	°
Radiator screen					°	°	°	°	°	°	°	°	°	°	°
Back-up buzzer					°	°	°	°	°	°	°	°	°	°	°
Tilt cylinder hole boots					°	°	°	°	°	●	°	●	°	●	°
Front mud guard					°	°	°	°	°	°	°	°	°	°	°
High profile spec					°	°	°	°	°	°	°	°	°	°	°
Steering pin boots					°	°	°	°	°	°	°	°	°	°	°
Rear mud guard					°	°	°	°	°	°	°	°	°	°	°

**Special applications**

	Safety	Durability	Productivity	Driveability	02-8FGF15	42-8FDF15	02-8FGF18	42-8FDF18	02-8FGF20	52-8FDF20	02-8FGF25	02-8FGF30	52-8FGF35	52-8FDF35	02-8FGKF20
Drive in rack					°	°	°	°	°	°	°	°	°	°	°
High capacity cooling spec.					°	°	°	°	°	°	°	°	°	°	°
Cold area package					°	°	°	°	°	°	°	°	°	°	°

● standard ° option

**Comfort**

	Safety	Durability	Productivity	Driveability	02-8FGF15	42-8FDF15	02-8FGF18	42-8FDF18	02-8FGF20	52-8FDF20	02-8FGF25	02-8FGF30	52-8FGF35	52-8FDF35	02-8FGKF20
Lexaan overhead guard sheets					°	°	°	°	°	°	°	°	°	°	°
W/o overhead guard sheet					°	°	°	°	°	°	°	°	°	°	°
Front windshield & roof					°	°	°	°	°	°	°	°	°	°	°
Half cabin (front windshield roof and rear window)					°	°	°	°	°	°	°	°	°	°	°
Half cabin with canvas door					°	°	°	°	°	°	°	°	°	°	°
Heater for half cabin					°	°	°	°	°	°	°	°	°	°	°
Steel cabin without heater					°	°	°	°	°	°	°	°	°	°	°
Steel cabin with heater					°	°	°	°	°	°	°	°	°	°	°
Steel cabin with 2 heaters					°	°	°	°	°	°	°	°	°	°	°
Premium cabin with full floating driver compartment					°	°	°	°	°	°	°	°	°	°	°
Air cooler (only on premium cabin)					°	°	°	°	°	°	°	°	°	°	°
Fabric seat msg65 premium					°	°	°	°	°	°	°	°	°	°	°
Vinyl seat msg65 premium					°	°	°	°	°	°	°	°	°	°	°
Fabric seat msg75 premium					°	°	°	°	°	°	°	°	°	°	°
Vinyl seat msg75 premium					°	°	°	°	°	°	°	°	°	°	°
Ors cloth seat w/suspension					°	°	°	°	°	°	°	°	°	°	°
Swivel seat (vinyl)					°	°	°	°	°	°	°	°	°	°	°
Multi-adjustable armrest					°	°	°	°	°	°	°	°	°	°	°
Armrest horn					°	°	°	°	°	°	°	°	°	°	°
Writing table					°	°	°	°	°	°	°	°	°	°	°
Reading light					°	°	°	°	°	°	°	°	°	°	°
Rear-pillar assist grip					°	°	°	°	°	°	°	°	°	°	°
Left hand shift lever					°	°	°	°	°	°	°	°	°	°	°
Ez pedal					°	°	°	°	°	°	°	°	°	°	°
Multi-adjustable armrest with minilevers					°	°	°	°	°	°	°	°	°	°	°
Multi-adjustable armrest with multi functional levers					°	°	°	°	°	°	°	°	°	°	°
Telescopic steering (column)					°	°	°	°	°	°	°	°	°	°	°

**Toyota SAS**

The unique System of Active Stability (SAS) is the world's first active system for controlling forklift stability. By protecting the operator and load when driving, turning and lifting, SAS provides advanced technology, increasing safety in the workplace and improving productivity. It includes: SAS Active Mast Tilt Angle Control, SAS Active Mast Tilt Speed Control, SAS Fork Levelling, SAS Active Steering Synchroniser, SAS Swing Lock Cylinder.

**Toyota lean industrial engines**

All Toyota engines are built in-house, for quality and long-term reliability. They are specifically designed for industrial applications and allow quick acceleration and optimised fuel efficiency. We offer the choice between diesel and LPG engines. The diesel range offers the reliable 1D3III engine, the highly fuel efficient 1Z5 and 1KD now including a Diesel Particulate Filter (DPF) for even cleaner operations. The LPG range offers 4Y and 1FS engine, both in-house designed and equipped with a 3-way catalytic converter and distributor-less ignition.

**Torque converter transmission**

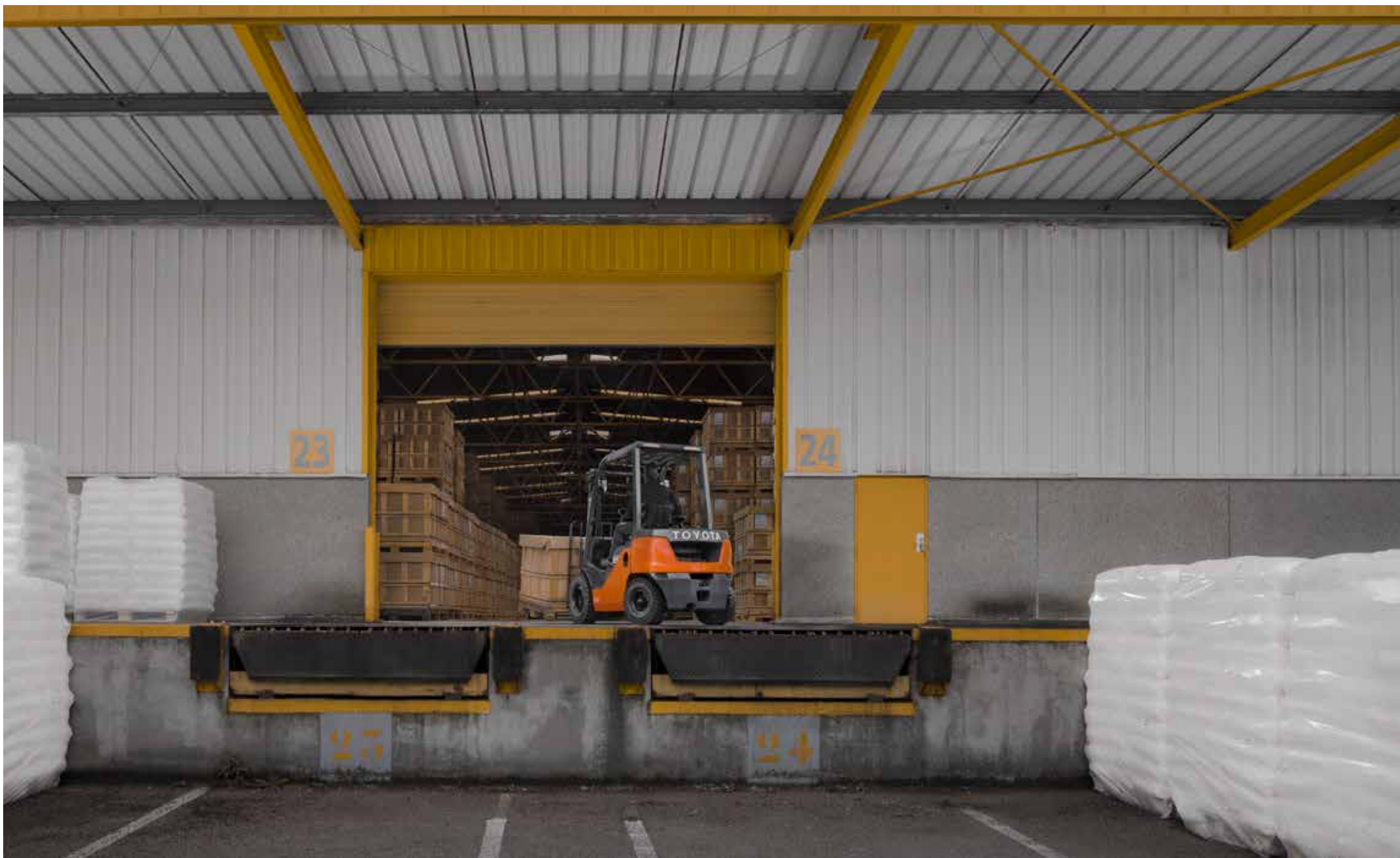
Torque converter models offer a smooth overall driving experience by powerful acceleration and the possibility of coasting, easy direction change, single speed transmission, and no gearshift.

**All-in-one display**

The new dashboard display is easy and intuitive. The controls are now all integrated in one place, in one single display for enhanced productivity and comfort of operators. New features include: indicators for hydraulic oil, wheels position, mast tilt, Diesel Particulate Filter (DPF), driving direction, time and fuel consumption overview.

**TPS-based reliability**

Like all Toyota trucks, Toyota Tonero trucks are built according to the Toyota Production System (TPS), ensuring the highest levels of quality, durability and reliability.





# TOYOTA TONERO

## HST

The Toyota Toner is a versatile family of engine-powered counterbalance trucks suitable for all applications up to 3.5 tonnes. They offer stability and productivity during these light to heavy-duty outdoor applications, and provide driver comfort as well as outstanding all-round visibility thanks to the wide range of cabins. The hydrostatic transmission is perfect for drivers who prefer automatic braking when releasing the accelerator. Stronger braking ability and low engine noise, as well as new Toyota in-house developed software which is available for the full range. These fast and manoeuvrable trucks are available with diesel or LPG engines.

## SPECIFICATIONS

**Load capacity:** 1.5, 1.75, 2.0, 2.5, 3.0, 3.5 t @ 500 mm load centre

**Maximum lift height:** 7.0 m

**Engine choice:**

- 1ZS (Diesel – 41 kW – DPF for 2t to 3.5t)
- 4Y (LPG – 38/42 kW)

**Available with:** **L\_Site**

**SAS**





New display including all-in-one controls for more efficiency.



New front LED light for more visibility and improved productivity (image above shows optional combination light).

[illegible]

## Engine

[illegible]

## Body

[illegible]

● standard ° option

**Lights and indicators**

	Safety	Durability	Productivity	Driveability	06-8FG15F	06-8FG18F	06-8FG20F	06-8FD20F	06-8FG25F	06-8FD25F	06-8FG30F	06-8FD30F	06-8FG35F	06-8FD35F
LED headlights	●			●	●	●	●	●	●	●	●	●	●	●
LED fr combination light				●	°	°	°	°	°	°	°	°	°	°
Mast additional headlights				●	°	°	°	°	°	°	°	°	°	°
Top additional headlights				●	°	°	°	°	°	°	°	°	°	°
Bottom additional headlights				●	°	°	°	°	°	°	°	°	°	°
Low profile LED mast mounted headlights				●	°	°	°	°	°	°	°	°	°	°
LED rear combination lights				●	●	●	●	●	●	●	●	●	●	●
Rear combination lights guard		●			°	°	°	°	°	°	°	°	°	°
LED-rear working light (selective lighting condition)				●	°	°	°	°	°	°	°	°	°	°
Add. rear LED working light				●	°	°	°	°	°	°	°	°	°	°
Rotary beacon				●	°	°	°	°	°	°	°	°	°	°
Flashing beacon				●	°	°	°	°	°	°	°	°	°	°
Lowered flashing beacon				●	°	°	°	°	°	°	°	°	°	°
Blue light (selective lighting condition)				●	°	°	°	°	°	°	°	°	°	°
Rear-view mirror, right and left sides				●	°	°	°	°	°	°	°	°	°	°
Panoramic mirror				●	°	°	°	°	°	°	°	°	°	°
Smart access			●		°	°	°	°	°	°	°	°	°	°
Keypad			●		°	°	°	°	°	°	°	°	°	°
I_Site with shock sensor			●		°	°	°	°	°	°	°	°	°	°
E-bar			●		°	°	°	°	°	°	°	°	°	°

**Comfort**

Lexaan overhead guard sheets				●	●	●	●	●	●	●	●	●	●	●
Full floating driver compartment				●	●	●	●	●	●	●	●	●	●	●
W/o overhead guard sheet				°	°	°	°	°	°	°	°	°	°	°
Front windshield & roof				●	°	°	°	°	°	°	°	°	°	°
Half cabin (front windshield roof and rear window)				°	°	°	°	°	°	°	°	°	°	°
Half cabin with canvas door				°	°	°	°	°	°	°	°	°	°	°
Heater for half cabin				°	°	°	°	°	°	°	°	°	°	°
Advanced steel cabin with heater (container height)				°	°	°	°	°	°	°	°	°	°	°
Advanced steel cabin with heater				°	°	°	°	°	°	°	°	°	°	°
Premium cabin				°	°	°	°	°	°	°	°	°	°	°
Aircooler (only on premium cabin)				°	°	°	°	°	°	°	°	°	°	°
Fabric seat msg65 premium				°	°	°	°	°	°	°	°	°	°	°
Vinyl seat msg65 premium				°	°	°	°	°	°	°	°	°	°	°
Fabric seat msg75 premium				°	°	°	°	°	°	°	°	°	°	°
Vinyl seat msg75 premium				°	°	°	°	°	°	°	°	°	°	°
Ors cloth seat w/suspension				°	°	°	°	°	°	°	°	°	°	°
Swivel seat (vinyl)				°	°	°	°	°	°	°	°	°	°	°

● standard ° option

**Comfort**

Multi-adjustable armrest with minilevers				●	●	●	●	●	●	●	●	●	●	●
Multi-adjustable armrest with multi functional levers				°	°	°	°	°	°	°	°	°	°	°
Writing table				°	°	°	°	°	°	°	°	°	°	°
Reading light			●	°	°	°	°	°	°	°	°	°	°	°
Rear-pillar assist grip			●	°	°	°	°	°	°	°	°	°	°	°
Left hand shift lever			°	°	°	°	°	°	°	°	°	°	°	°
Telescopic steering (column)			°	°	°	°	°	°	°	°	°	°	°	°

**Safety features**

Toyota SAS (System of Active Stability)		●	●	●	●	●	●	●	●	●	●	●	●	●
Operator presence sensing system		●	●	●	●	●	●	●	●	●	●	●	●	●
Orange safety belt		●	●	●	●	●	●	●	●	●	●	●	●	●
Safety belt recognition switch		●	●	●	●	●	●	●	●	●	●	●	●	●
Speed control (max & turtlespeed)		●	●	●	●	●	●	●	●	●	●	●	●	●
Travel and load handling control		°	°	°	°	°	°	°	°	°	°	°	°	°

**Special applications**

Drive in rack			°	°	°	°	°	°	°	°	°	°	°	°
High capacity cooling spec.			°	°	°	°	°	°	°	°	°	°	°	°
Cold area package		°	°	°	°	°	°	°	°	°	°	°	°	°

**Toyota SAS**

The unique System of Active Stability (SAS) is the world's first active system for controlling forklift stability. By protecting the operator and load when driving, turning and lifting, SAS provides advanced technology, increasing safety in the workplace and improving productivity. It includes: SAS Active Mast Tilt Angle Control, SAS Active Mast Tilt Speed Control, SAS Fork Levelling, SAS Active Steering Synchroniser, SAS Swing Lock Cylinder.

**Toyota industrial engines**

All Toyota engines are built in-house, for quality and long-term reliability. They are specifically designed for industrial applications, providing quick acceleration and optimised fuel efficiency. HST models come with a 125 engine with a Diesel Particulate Filter surpassing Stage V regulation ensuring lean and clean material handling operations.

**Hydrostatic transmission**

The hydrostatic (HST) version offers an alternative to the torque converter version by delivering powerful engine braking and acceleration with pre-set driving parameters, quick direction change, independent lift and drive functionality, an electrical parking brake and 'stop-on-ramp' functionality. Improvements include the availability of the high-power 3-cylinder diesel engine (2-3.5t). Stronger braking ability and low engine noise, as well as new Toyota in-house developed software which are available for the full range.

**Outstanding driver experience**

As from 2t the HST model offers ultimate driver comfort thanks to the full floating driver compartment lowering vibration and noise levels for optimal productivity.

**TPS-based reliability**

Like all Toyota trucks, Toyota Tonero trucks are built according to the Toyota Production System (TPS), ensuring the highest levels of quality, durability and reliability.



Toyota  
The total business solution

---



New & used trucks



Service Support



Short-term Hire

02890812864

[www.carryduff.co.uk](http://www.carryduff.co.uk)

